

SPECIFICATIONS

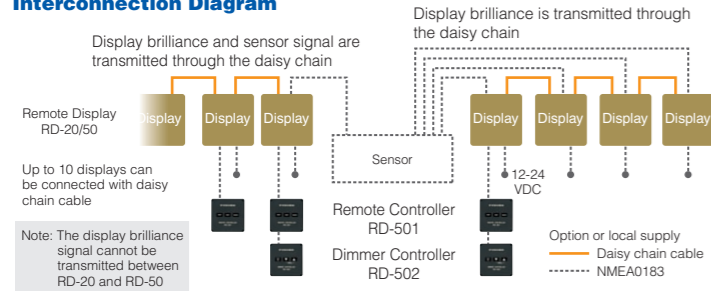


Model	RD-20	RD-50
Display	Red LED	8.4-inch color LCD
Power Supply		
Remote Display (RD-20/50)	DC 12-24 V	DC 12-24 V
Remote Controller (RD-501)		DC 5 V
Dimmer Controller (RD-502)		DC 5 V
Environment		
Temperature	-15°C~+55°C	-25°C~+55°C
Waterproofing	Display	Front: IP22 Back: IP22
	Flush mount	Front: IP56 Back: IP22
	Wall mount (with Waterproof Box)	Front: IP56 Back: IP56
	Remote Controller (RD-501)	Front: IP22 Back: IP20
	Dimmer Controller (RD-502)	Front: IP22 Back: IP20
Vibration	IEC 60945-4	

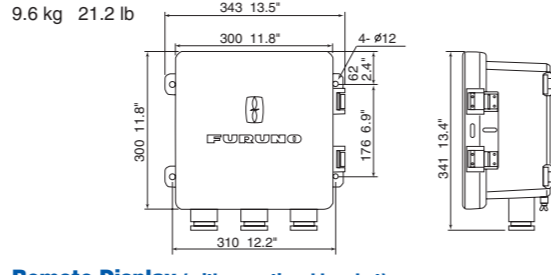
Equipment List

Standard	
Remote Display	RD-20/50
Installation Materials	
Option	
Remote Controller	RD-501
Dimmer Controller	RD-502
Waterproof Box (for RD-50)	DS-605
Bracket for desktop mounting	

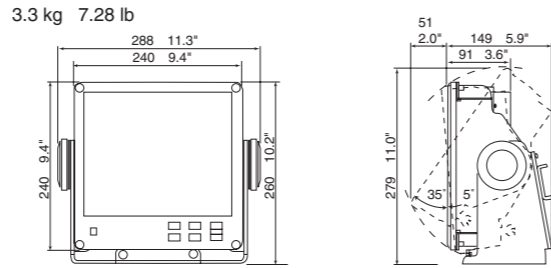
Interconnection Diagram



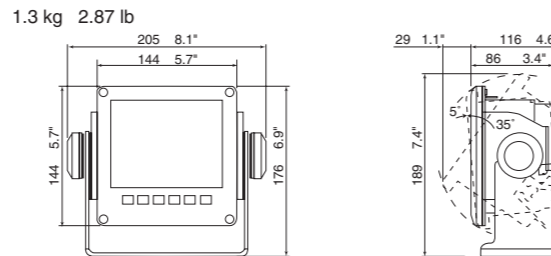
**Waterproof Box (for RD-50)
DS-605**



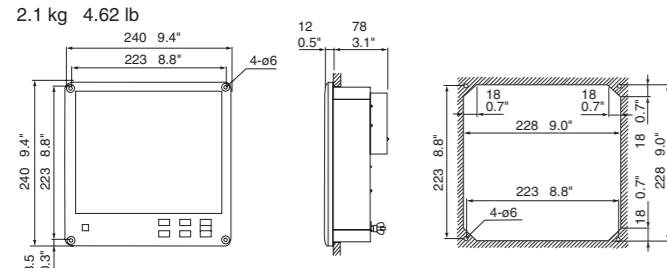
**Remote Display (with an optional bracket)
RD-50**



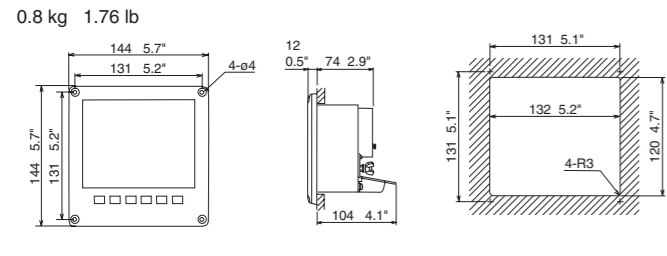
**Remote Display (with an optional bracket)
RD-20**



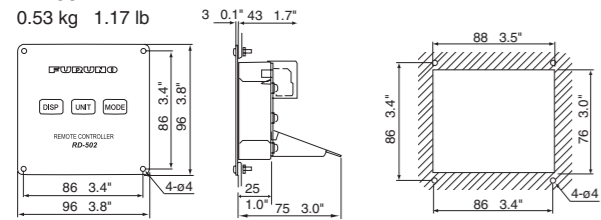
**Remote Display (Flush mount)
RD-50**



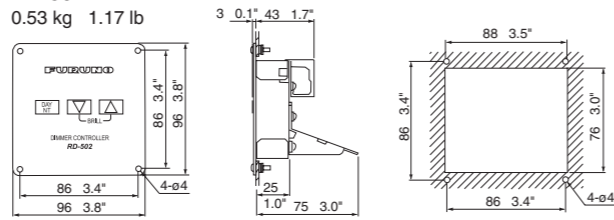
**Remote Display (Flush mount)
RD-20**



**Remote Controller
RD-501**



**Dimmer Controller
RD-502**



All brand and product names are registered trademarks, trademarks or service marks of their respective holders.
 SPECIFICATIONS SUBJECT TO CHANGE WITHOUT NOTICE

REMOTE DISPLAY

RD-20/RD-50



RD-20



RD-50

FURUNO RD-20/50 give a unified look for the sensor displays that carries an array of important navigation information from onboard sensors

REMOTE DISPLAY

The RD-20/50 are the remote display units that display the data from onboard sensors. The displays are switched by the remote controller. The RD-50, 8.4-inch color LCD, has 3 display modes: digital, analog and graph. The RD-20 shows the data in alphanumeric on its red LED panel.

Up to 10 displays can be connected with a daisy chain cable. The display brilliance of all units connected can be centrally controlled from 1 dimmer controller.

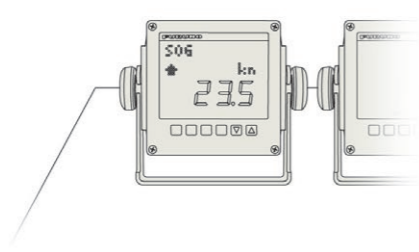
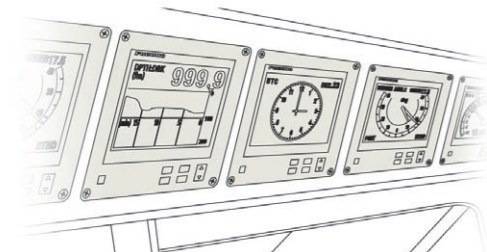
- ▶ High-contrast 8.4-inch color LCD
- ▶ Digital/graph/analog displays available
- ▶ Display orientation of up to 4-way split screen
- ▶ Viewable under the direct sunlight at wing console
- ▶ Adjustable display background color for use in both daytime and night time
- ▶ Red LED display
- ▶ Up to 10 displays can be connected with a daisy chain cable
- ▶ Display brilliance can be collectively controlled from one dimmer controller under the daisy chain connection



Suggestion for installation

● Overhead console

● Desktop



The RD-20/50 can be mounted on the overhead console as well as on the desktop. Both units come with an optional bracket for desktop mounting. The RD-50 can also be installed overboard with the optional waterproof box.



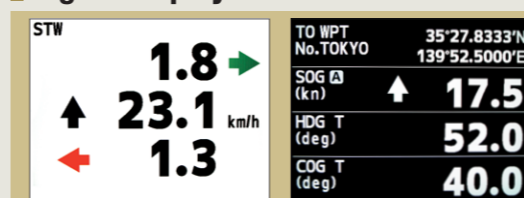
RD-20



RD-50

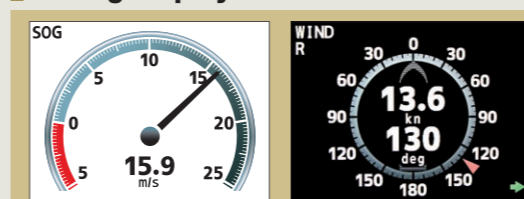
RD-50 Data to be displayed

Digital display



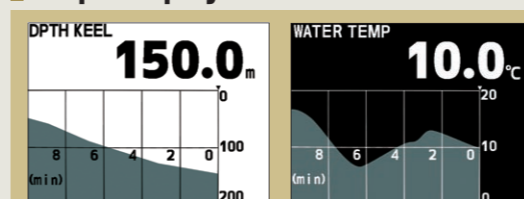
- Ship speed kn, km/h, m/s
- Heading (HDG) deg
- Course (COG) deg
- Actual / Ordered rudder angle deg
- Depth m, ft, fm
- Total distance NM, km
- Trip distance NM, km
- Water temperature °C, °F
- Rate of turn (ROT) deg/min
- Wind Direction deg
- Wind Speed / Speed kn, km/h, m/s, mph
- Propeller pitch %
- Engine revolutions rpm
- Shaft revolutions rpm
- Time
- Latitude and Longitude
- Destination
- 1/2/3-axes ship speed

Analog display



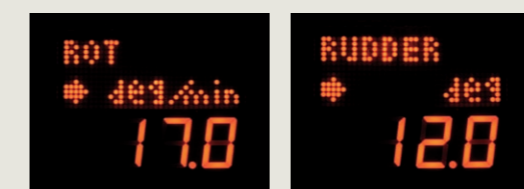
- Wind Direction / Speed deg kn, km/h, m/s, mph
- Propeller pitch %
- Rate of turn (ROT) deg/min
- Ship speed kn, km/h, m/s
- Engine revolutions rpm
- Shaft revolutions rpm
- Actual / Ordered rudder angle deg
- Drift / HDG / COG deg
- Time

Graph display



- Water temperature °C, °F
- Depth m, ft, fm

RD-20 Data to be displayed



- Ship speed kn, km/h, m/s
- Heading (HDG) deg
- Course (COG) deg
- Actual / Ordered rudder angle deg
- Depth m, ft, fm
- Total distance NM, km
- Trip distance NM, km
- Water temperature °C, °F
- Rate of turn (ROT) deg/min
- Wind Direction / Speed deg kn, km/h, m/s, mph
- Engine revolutions rpm
- Propeller pitch %
- Shaft revolutions rpm